

AXISPRO 199

GTV

Vodila za predale

→ AxisPro



AXISPRO 199

Vodila za predale

→ AxisPro

GTV

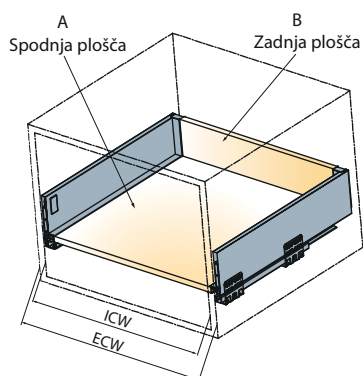
Spodnja plošča in hrbet

Dimenzije dna in hrbta so odvisne od:

- Širine omare
- Nazivne dolžine predala
- Višine predala

Nazivna dolžina Tekform drawer (NL) v mm

NL	250	300	350	400	450	500	550
----	-----	-----	-----	-----	-----	-----	-----



Širina omare

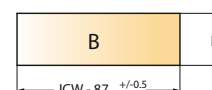
ECW - zunanja širina omare
ICW - notranja širina omare
NL - nazivna dolžina predala

*Dimenzije rezanja plošč

Rezanje dimenzij zadnje plošče

Višina zadnje stene je odvisna od izbrane višine predala.

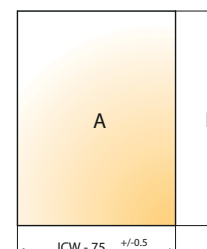
	H zadnja plošča
SDWD84	84
SDWD116	116
SDWD167	167
SDWD199	199



Rezanje dimenzij spodnje plošče

NL	250	300	350	400	450	500	550
L	226	276	326	376	426	476	526

L = NL - 24 mm



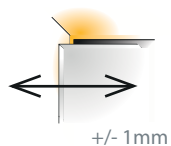
AXISPRO 199

Vodila za predale

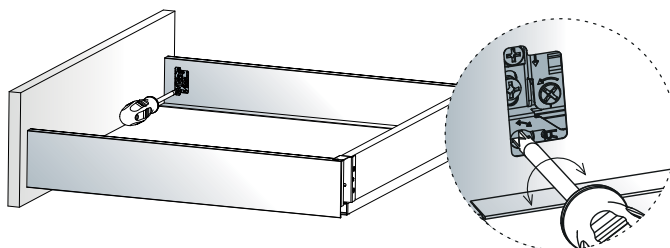
→ AxisPro

GTV

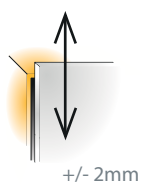
Stranska nastavitev



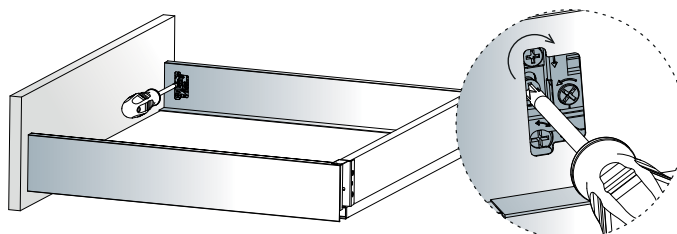
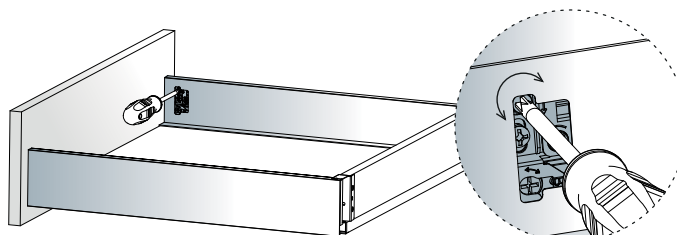
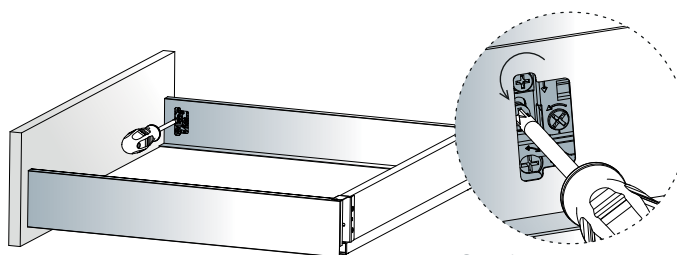
Stranska nastavitev se izvede na strani v predalu.



Nastavitev višine



Najprej spustite zaporni vijak in privijte nazaj po nastavitvi sprednje strani.

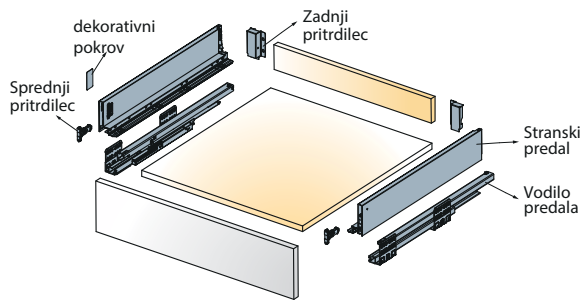
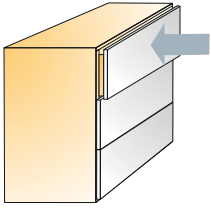


AXISPRO 199

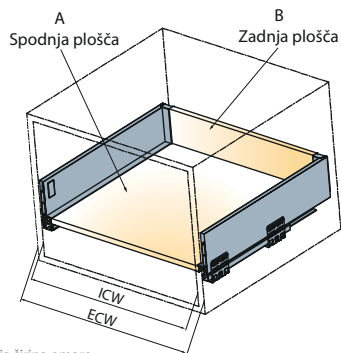
GTV

Vodila za predale

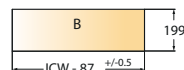
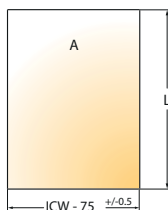
→ AxisPro



Podrobnosti rezanja dimenzij



ECW: zunanja širina omare
ICW: Notranja širina omare
NL: Nazivna dolžina predala



$$L = NL - 24$$

4 seti

Nazivna dolžina (mm)	Z vijakom sprednji pritržilec		
		Bela	Siva antracit
	Številka izdelka za komplet		
250	PB-AXISPRO-KPL-250	D1	D
300	PB-AXISPRO-KPL-300	D1	D
350	PB-AXISPRO-KPL-350	D1	D
400	PB-AXISPRO-KPL-400	D1	D
450	PB-AXISPRO-KPL-450	D1	D
500	PB-AXISPRO-KPL-500	D1	D
550	PB-AXISPRO-KPL-550	D1	D

En set vsebuje		
Stranice predala		2 kos
Vodila predala		2 kos
Prednji pritržilec		2 kos
Zadnji pritržilec		2 kos
Pokrovi		2 kos 2 kos
Navodila za montažo		1 kos