

# AXISPRO 199

GTV

Vodila za predale

→ AxisPro



# AXISPRO 199

Vodila za predale

→ AxisPro

GTV

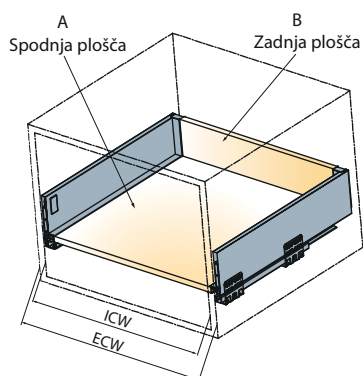
## Spodnja plošča in hrbet

Dimenzije dna in hrbta so odvisne od:

- Širine omare
- Nazivne dolžine predala
- Višine predala

Nazivna dolžina Tekform drawer (NL) v mm

NL	250	300	350	400	450	500	550
----	-----	-----	-----	-----	-----	-----	-----



Širina omare

ECW - zunanja širina omare  
ICW - notranja širina omare  
NL - nazivna dolžina predala

\*Dimenzije rezanja plošč

## Rezanje dimenzij zadnje plošče

Višina zadnje stene je odvisna od izbrane višine predala.

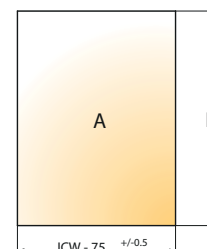
	H zadnja plošča
SDWD84	84
SDWD116	116
SDWD167	167
SDWD199	199



## Rezanje dimenzij spodnje plošče

NL	250	300	350	400	450	500	550
L	226	276	326	376	426	476	526

L = NL - 24 mm



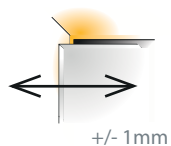
# AXISPRO 199

Vodila za predale

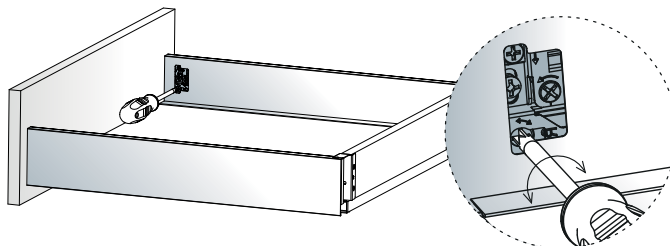
→ AxisPro

GTV

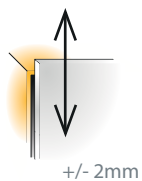
## Stranska nastavitev



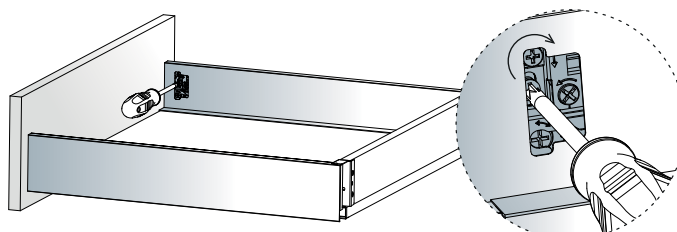
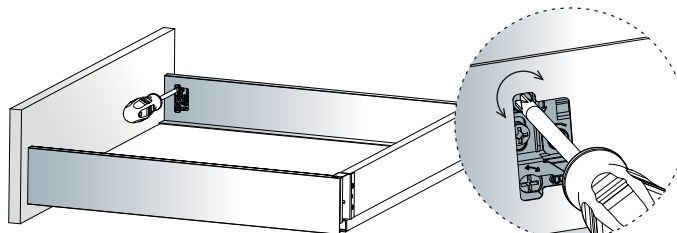
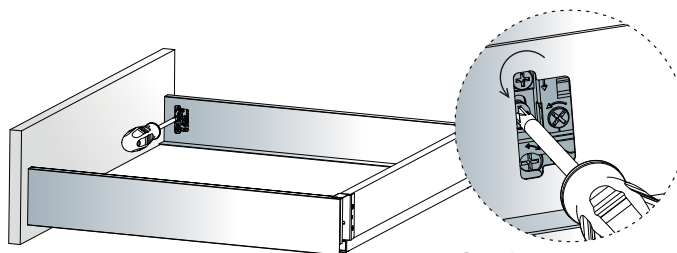
Stranska nastavitev se izvede na strani v predalu.



## Nastavitev višine



Najprej spustite zaporni vijak in privijte nazaj po nastavitvi sprednje strani.

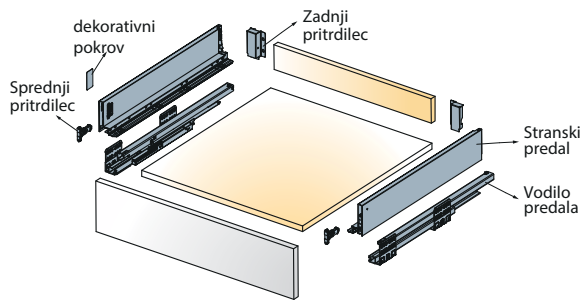
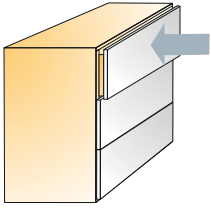


# AXISPRO 199

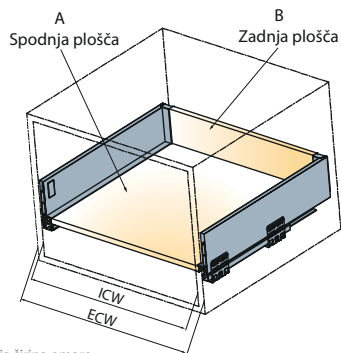
GTV

Vodila za predale

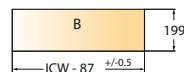
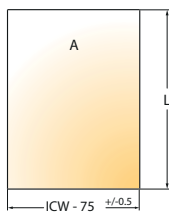
→ AxisPro



Podrobnosti rezanja dimenzij



ECW: zunanja širina omare  
ICW: Notranja širina omare  
NL: Nazivna dolžina predala



L = NL - 24

4 seti

Nazivna dolžina (mm)	Z vijakom sprednji pritrdilec	Barva	
		Bela	Siva antracit
	Številka izdelka za komplet		
250	PB-AXISPRO-KPL-250	D1	D
300	PB-AXISPRO-KPL-300	D1	D
350	PB-AXISPRO-KPL-350	D1	D
400	PB-AXISPRO-KPL-400	D1	D
450	PB-AXISPRO-KPL-450	D1	D
500	PB-AXISPRO-KPL-500	D1	D
550	PB-AXISPRO-KPL-550	D1	D

En set vsebuje

Stranice predala 2 kos

Vodila predala 2 kos

Prednji pritrdilec 2 kos

Zadnji pritrdilec 2 kos

Pokrovi 2 kos

Navodila za montažo 1 kos